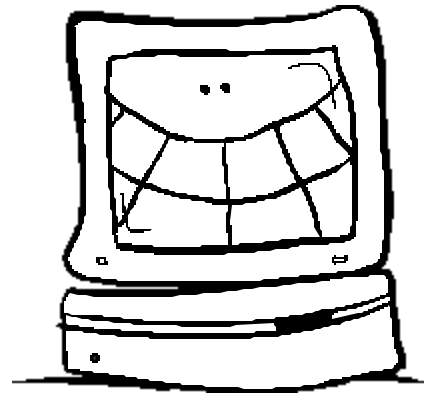


Computer Talk....

Classic ANAGRAMS date back over a hundred years. They are a REARRANGEMENT of the letters of a word or phrase to make a different but RELATED word or phrase.

When asked to describe its job, the computer stated that it was..

“To scan a visible star or moon”



- Rearrange the letters to find out what the computer did.
- Check yourself by finding the value of the binary number.
- Fill in the letter above its corresponding value as a standard numeral.

CONVERT TO STANDARD NUMERALS:

11001 - T	10101 - A	1001 - L	101 - O
11 - O	11111 - V	100001 - E	1000 - R
11101 - S	101000 - I	10111 - S	100000 - M
10001 - C	11000 - S	11011 - T	100011 - O
10 - A	111 - I	110 - A	1110 - O
1010 - N	1011 - B	100 - R	1111 - N

3	11	29	33	4	31	21	25	7	5	10	23

2	24	27	8	14	15	35	32	40	17	6	9